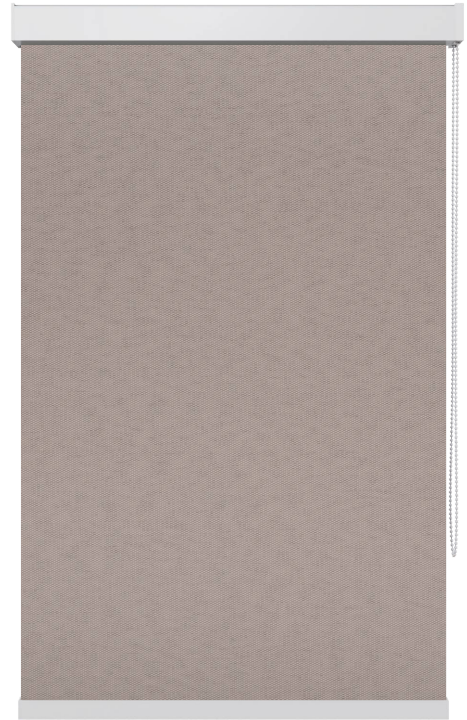


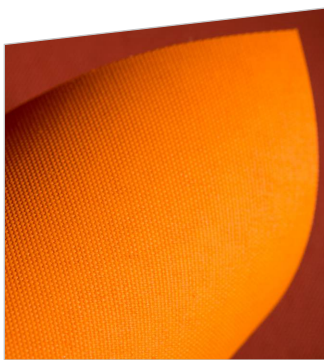


CATALOGUE



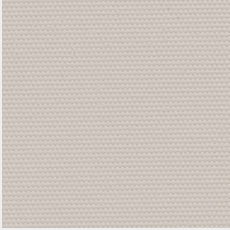
Kenia

ROLLER BLIND FABRICS

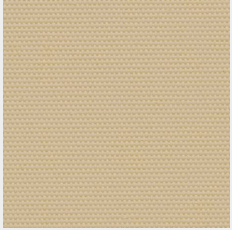


| | | |
|---|--|---|
|  | Nazwa kolekcji Collection name | Kenia |
|  | Kody Code | KE 711-728 KE-XL 711, 712, 714, 715, 722, 725, 726 |
|  | Opis Description | Gładka, Niepalna Plain, Flame retardant |
|  | Szerokość rolki materiału Fabric width | KE - 200 cm KE-XL - 250 cm |
|  | Jm (Nawój) Unit | 30 m |
|  | Skład Fabric composition | 100% PES |
|  | Gramatura Weight | 230 g/m ² |
|  | Grubość materiału Fabric thickness | 0,31 mm |
|  | Trwałość koloru Light fastness | >5 |
|  | Przepuszczalność światła Light transmission | Przepuszczająca światło Lucent |
|  | Trudnozapałny Fire classification | Tak Yes |
|  | Atest higieniczny Hygienic certificate | Tak Yes |
|  | OEKO-TEX® | Tak Yes |
|  | Sposób czyszczenia Cleaning advise | Wilgotna ścierka Damp cloth |
|  | Sposób cięcia Cut advise | Nóż, Gilotyna Cutter, Guillotine |

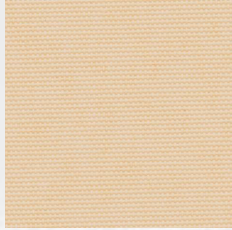
Kenia



KE-711



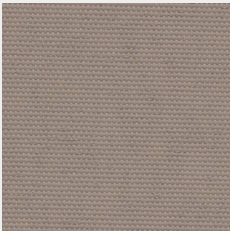
KE-712



KE-713



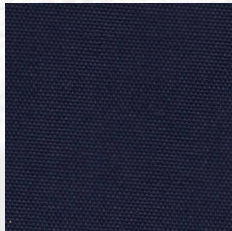
KE-714



KE-715



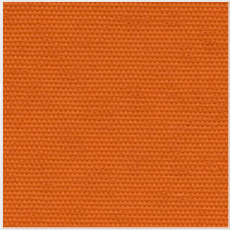
KE-716



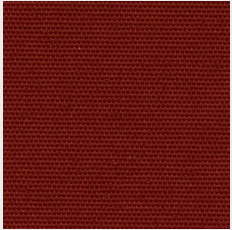
KE-717



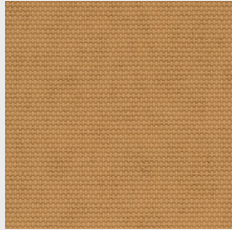
KE-718



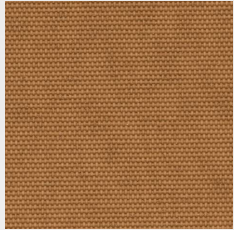
KE-719



KE-720



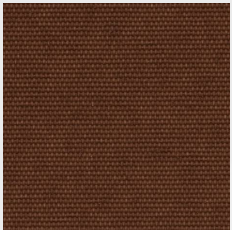
KE-721



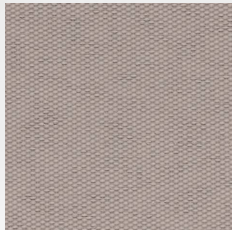
KE-722



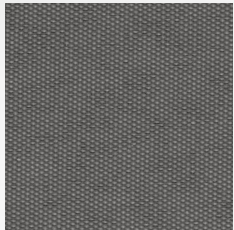
KE-723



KE-724



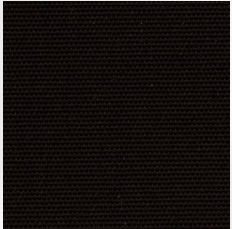
KE-725



KE-726



KE-727



KE-728